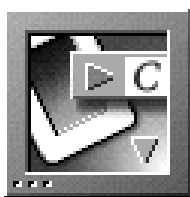
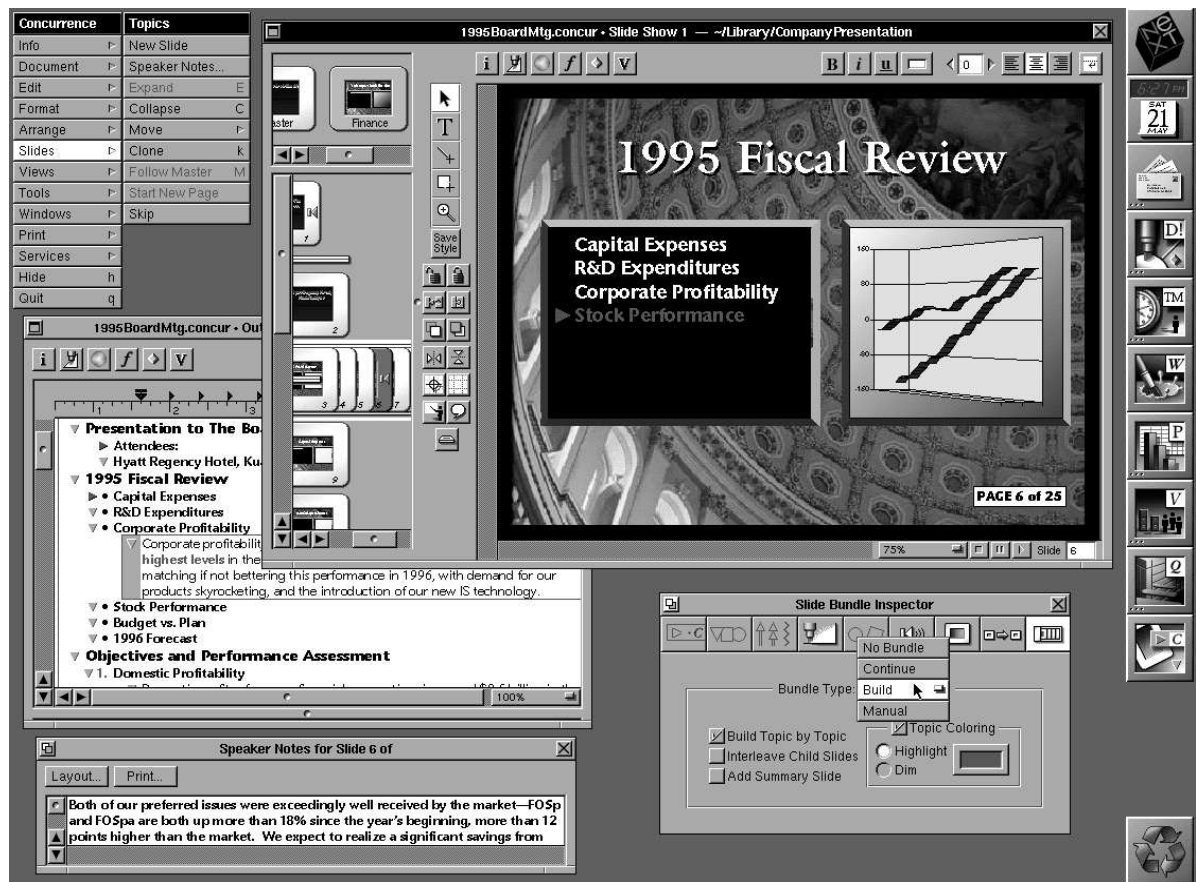


FEATURES AND BENEFITS

NEW	OUTLINE EDITING & FORMATTING	<ul style="list-style-type: none"> • Fast, easy-to-use outliner speeds presentation brainstorming with collapse and expand, drag and drop text editing, and more • Page breaks and page numbering now supported in outliner • Button ribbon on outlines provides easy access to panels and features • Customizable bullets and line labels, include support for images as labels • Centralized "level" formatting automates large document preparation
NEW	TEXT EDITING & FORMATTING	<ul style="list-style-type: none"> • Left, right, center justification • Wrap/Don't Wrap Line • Line spacing and line numbering • Spell Checking, Find/Replace
NEW	SLIDE EDITING & FORMATTING	<ul style="list-style-type: none"> • Integrated slide sorter allows point and click sorting of individual slides or presentation "modules" (groups of slides) • Named master slides allow you to create standard templates for enterprise presentations (e.g., "Title_Format," "Section_Head," "Conclusion_Page") • Support is provided for an infinite number of master slides—choose from a broad selection of bundled templates, or create and share your own • Drag and drop master formats onto slides for instantaneous formatting • Speaker's notes allow users to jot down talking points for slides • Button ribbon on slides provides easy access to panels and features • "Duplicate" feature replicates entire slideshows and graphics • Automatic page numbering, with support for dates, more
NEW	EXPANDED COMPATIBILITY	<ul style="list-style-type: none"> • Read and write compatibility with Microsoft PowerPoint files • Compatibility with Aldus Persuasion™ & Lotus Freelance™, coming soon!
NEW	BUNDLES & BUILDS	<ul style="list-style-type: none"> • Continuation slides allow one topic to flow over multiple slides, displaying user definable prefixes ("More on...") or suffixes ("Cont'd.") • "Build" or "progressive disclosure" allows presenter to build on one thought over several slides—edit only one, and Concurrence updates them all • Build topics can be automatically highlighted or dimmed
NEW	ADVANCED SLIDE GRAPHICS	<ul style="list-style-type: none"> • Drag and drop color for text and graphics • On slide graphics capability provides a powerful array of drawing tools for simple graphics or sophisticated diagrams • Graphics support includes full rotation of all text and shapes • Drag and drop over 30 standard image formats (from PC's, too!)
NEW	LINKING & ATTACHMENTS	<ul style="list-style-type: none"> • Drag & drop to link any file (EPS/TIFF, application files, spreadsheets, drawings) • Support for NEXTSTEP Object Links • Display imageable files as file icons, graphics or link buttons
NEW	ON-SCREEN PRESENTATION	<ul style="list-style-type: none"> • User customizable electronic "highlighters" allow presenters to draw on slides during presentation for added emphasis • Scores of new, highly optimized transition effects for on-screen playback • Voice-overs can be recorded for playback during presentation—or added from sound files you create elsewhere • Selected slides can be automatically skipped during presentation • Manual or automatic playback, with pause, loop and user defined durations
NEW	OUTPUT OPTIONS	<ul style="list-style-type: none"> • Slide "thumbnails" allow you to print up to 16 slides per page, with or without speaker's notes or room for note-taking • Support for color slide "drafts" and handouts—automatically transformed to black and white for easy review on standard laser printers • 35mm slides can be output from any PostScript® imager • Overheads & viewgraphs can be output from any NEXTSTEP supported printer • Self running presentations can be distributed on-line via NeXTmail
	PRODUCT AVAILABILITY	<ul style="list-style-type: none"> • Available now for NEXTSTEP 3.1 or later • Available in Q3 '94 for Hewlett-Packard's PA-RISC workstations • Available in Q4 '94 for Sun Microsystems' OpenStep™ Architecture • Includes complete user manual, and on-line help and documentation • Technical support and training contracts are available • Site license and runtime licensing available
	FOR MORE INFORMATION	<ul style="list-style-type: none"> • Call 1-800-366-2279 or +1-415-570-7736 • Send electronic mail to concurrence@lighthouse.com • Over the internet, http://www.lighthouse.com/

CONCURRENCE



Lighthouse Design's Concurrence™ 2 is NEXTSTEP's® premiere integrated presentation and outlining package. With its many compelling features, Concurrence provides users with all of the tools they need to create polished presentations—from 35mm slides and overheads to viewgraphs and on-line briefings.

Concurrence offers powerful new features, including the ability to read and write Microsoft® PowerPoint files, support for NEXTSTEP Object Links, automatic page numbering, speaker's notes and handouts, customizable bullets, build and continuation slides, the ability to electronically emphasize slides on screen during presentations with a "highlighter," and much more.

Concurrence includes a drag and drop outline processor that automates the preparation of structured documents. Presentations and outlines are seamlessly integrated to work together, allowing users to prepare large structured presentations first in outline form, then automatically format them into slides. Outlines and slides are edited simultaneously, enabling brainstorming and flexibility during the presentation development phase.

Concurrence includes an enhanced range of built-in graphics functionality and accepts over 30 standard image formats, enabling users to easily create and add sophisticated graphics to their slides.

With Concurrence, writing impressive and graphically elegant presentations has never been easier!

Concurrence, Lighthouse Design's newly enhanced presentation and outlining package for NEXTSTEP, provides users with all of the tools they need to easily create professional, high-impact presentations.

Lighthouse
DESIGN LTD